



AEFA

Spring 2007



American Education Finance Association Newsletter

Call for Nominations

-- IN MEMORIAM --

George Alan Karnes Wallis Hickrod

1930 TO 2006

President and Board of Directors

Founder, Past-President, connoisseur, teacher, mentor. Read Gene McLoone's eulogy for G. Alan Hickrod ([page 7](#)).

Slots Open for Five Board Seats

Please submit nominations to Julie Cullen (jbcullen@weber.ucsd.edu) or Richard Rothstein (rrothstein@epi.org), co-chairs of the nominations committee, by **June 14, 2007**. Additional nominations may be considered at later dates.

[\(continued on page 6\)](#)



Jim Guthrie (left) presented the **OUTSTANDING SERVICE AWARD for 2007** to **Richard Rothstein** at the AEFA Conference.

RICHARD ROTHSTEIN RECEIVES AEFA'S 2007 OUTSTANDING SERVICE AWARD

AEFA annually awards an honor to one of its members, an individual who has performed notable service, either to the organization, to the profession, or to the field of education finance and policy scholarship. The award, while traditionally presented by the outgoing AEFA Past President, is the result of a deliberative process undertaken by the AEFA Executive Committee and is ratified by the Board of Directors. Nominees were solicited from throughout the general membership.

Past recipients have included virtually every notable in the field of education finance. In some instances, it has been an individual such as Edwin Steinbrecher . . .

[\(continued on page 3\)](#)

Inside This Issue (Click to find article)

[2007 Conference wrap-up](#)

[Outstanding Service Award to Richard Rothstein](#)

[Dissertation Award to Daniel W. Player](#)

[New Scholars Award to Katharine Strunk and Kavita](#)

[Mittapalli](#)

[New President and Board Members Elected](#)

[AEFA Seeks Candidates for President and Board of Directors](#)

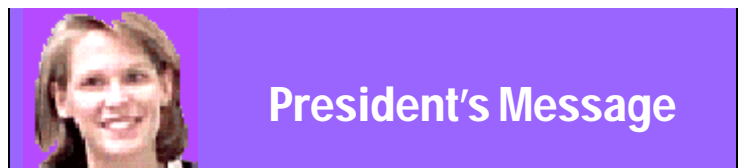
[Highlights of AEFA Spring Board Meeting](#)

[Gene McLoone's Eulogy for G. Alan Hickrod](#)

Attachments

[Duties of Board of Directors](#)

[Duties of President and President-Elect](#)



President's Message

Jennifer King Rice is Associate Professor of Education at the University of Maryland. She is Co-Director of the Center for Education Policy and Leadership. She assumed the presidency of AEFA following the March, 2007 meeting in Baltimore.

Dear AEFA Colleagues,

I am honored and delighted to be serving as the president of AEFA. This is a very exciting time to be at the helm of such a vibrant organization as it continues to grow and develop...

(continued on next page)

Please submit your contribution to the *AEFA Newsletter* by AUGUST 1, 2007 to hnelson@aft.org. The newsletter is sent to members of AEFA and helps the Board of Directors conduct the business of the organization. The newsletter also provides opportunities to share information on a wide range of school finance organizations, publications and activities. Most recent info at <http://www.aefa.cc/>.

(President's Message continued)

... In recent years, we have made considerable investments in our association's publications, and are now reaping the benefits. Under the editorship of David Figlio and David Monk, our journal, *Education Finance and Policy*, is currently in its second year of print. The first volume included four issues of high-quality articles and policy briefs addressing a range of important and timely matters. We are very proud of this journal, and are grateful to the editors for their time and dedication. In addition, we are appreciative of the American Institutes for Research for their continued support of the journal.

I would also like to acknowledge the hard work of Helen Ladd and Ted Fiske in editing the association's *Handbook of Research in Education Finance and Policy*. A true collaborative effort, this volume includes the contributions of 71 persons, including the general editors and the 11 section editors. The purpose of the *Handbook* is to assemble in one place the existing research-based knowledge in education finance and policy, and thus to help define the current state of this evolving field of research and practice. The *Handbook* promises to be a valuable resource for current and future members of AEFA as well as anyone else seriously involved in education finance and policy.

We also had a very successful conference in Baltimore, Maryland last March. With almost 375 attendees, the 2007 meeting enjoyed the highest attendance since 1978, a year in which federal money was awarded to states to study and improve state aid programs. We are very pleased with the results of our post-conference on-line survey. Over 90% of respondents rated our concurrent paper sessions as either excellent or good and about 95% of paper presenters rated their experience as either excellent or good. I am also pleased to report that almost 90% of our respondents indicated that they are highly likely or likely to attend the 2008 conference in Denver. The thoughtful comments and suggestions provided by conference attendees will assist President-Elect Amy Ellen Schwartz as she works on developing themes and sessions for the 2008 conference to be held April 10-12 in Denver, Colorado.

Amidst these noteworthy accomplishments, the AEFA leadership is aware of and poised to address the challenges that come with an evolving organization. Perhaps most significant, is the goal of a diverse membership that represents the different perspectives on education finance. AEFA has a long history that includes a broad range of practitioners, policy makers, and researchers. As the organization continues to grow, we need to be sure to nurture and promote that critical balance of perspectives in our membership. A second challenge relates to the importance of preserving and documenting the history of AEFA. At the suggestion of Jewell Gould, we are exploring ways to construct an AEFA archive. These are among the issues that the

Board of Directors will address during their June meeting in Nashville.

The strength and continued growth of AEFA is a testament to the tremendous leadership enjoyed by this organization over the years. This summer marks the next transition in the executive directorship of AEFA, and many thanks are in order. First, we are very grateful to Ed Steinbrecher, outgoing Executive Director, for his many years of service to our organization. I look forward to celebrating his contributions to AEFA during a special tribute during the 2008 annual meeting.



Left to Right, Incoming Executive Director **Craig Wood**, Executive Director Emeritus **George Babigian** and Current Executive Director **Ed Steinbrecher**.

As of July 1 the new email address will be Craig@AEFA.cc or aefa@coe.ufl.edu

Second, we are delighted to welcome Craig Wood as he transitions into the role of Executive Director, and we are grateful for his willingness to serve the organization in this capacity. Finally, many thanks to Chris Roellke, Immediate Past President, for coordinating this changing of the guard and for his impressive leadership over the past year. I look forward to working with Ed, Craig, Chris, and the Board of Directors this year. As always, we will continue to solicit feedback from our membership on important issues facing the organization. Should you, as a member, have issues you believe worthy of Board consideration, please don't hesitate to inform me or other Board members.

Thank you again for the honor of serving as AEFA President. Best wishes for a wonderful summer.

- Jennifer King Rice
AEFA President

**--Wrap-up--
2007 Annual Conference
Baltimore**



With almost 375 attendees, the 2007 meeting enjoyed the highest attendance since 1978, a year in which federal money was awarded to states to study and improve state aid programs.

Nancy Grasmick, Maryland State Superintendent of Schools, kicked off the conference, welcoming everyone at the first general session.

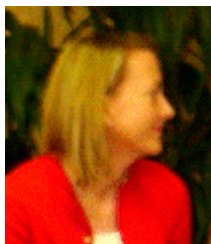


Mark Schneider Commissioner, National Center for Education Statistics had the daunting task of making data sound interesting with his address titled, **"Improving the Fiscal Data Collected by the National Center for Education Statistics"**.

AEFA President **Chris Roelke**, Vassar College, gave the AEFA Presidential Address.



The Friday Luncheon featured an intense discussion of the **"Reauthorization of No Child Left Behind: The Federal Perspective"**.



Kerri Briggs, Assistant Secretary for Planning, Evaluation, and Policy Development, U.S. Department of Education represented the Bush administration. Jack Jennings, President and CEO, Center for Education Policy, brought 35 years of inside-the-beltway political insight to the discussion.



Pre-conference workshops. David Thompson presents at his year's annual education finance litigation workshop. This was one of three pre-conference workshops



Friday Evening Reception. As we all know the heart of any professional meeting is the socialization and networking.



(Continued from first page)

Rothstein Awarded Outstanding Service Award

... without whose managerial leadership and organizational guidance AEFA may, literally, have foundered at some point in its past. David Monk was previously recognized for his unusual service as a mentor, having served as the doctoral chair for literally tens of the field's most outstanding scholars. In other instances, it has been someone such as Leanna Stiefel, whose contributions to scholarship, along with Robert Berne, substantially facilitated the statistical measurement of financial equality, enabling the equal protection movement to become practical and flourish in courts.

This year's award winner is in the same tradition. He is an individual who has simultaneously served AEFA organizationally, as a remarkably productive and selfless contributor to the Board of Directors, and has consistently influenced the field through distinguished writings as a public intellect. Through remarkably thorough scholarship, his writing involves the relationship of social class to schooling generally and to education finance and policy more specifically.

Educators and laypersons alike rapidly acclaimed his regularly appearing *New York Times* columns on education. Their hallmark was their accuracy, objectivity, and insight. His several books on education and social class have created widespread scholarly and policy maker understanding of the intricate reciprocal relationships between a child's social and economic conditions, neighborhood environments, peers group surroundings, and prospects of school success. Indeed, the contents of these books now invariably find their way into the thinking of those in the policy world and go through printing after printing to satisfy the demands of the education world.

A little known fact regarding this year's recipient is that he sacrificed his own early academic career and advanced degree aspirations to participate in a cause larger than his own immediate interest. He left a doctoral program at the London School of Economics to participate actively in the Civil Rights movement, an endeavor he took to be so important, a cause so right and so just, as to override his personal academic goals. Throughout the 1960's he engaged in voter registration drives, Freedom Rides throughout the south, and union organizing among low-paid workers. Despite having seen prejudice in its most ugly guises and collective forms, he somehow, remarkably, always to this day maintains the most open frame of mind and calm disposition toward each person he encounters, individual by individual.

However, having sacrificed a part of his own academic career, at least in a conventional sense, he now thoroughly takes pride in the unusually promising careers of his son and daughter. Jesse holds a doctorate in Economics from the University of California, Berkeley and is an Assistant Professor of Economics at Princeton University. At a remarkably early point in his career he has managed to challenge and apparently subdue Harvard dogma in the field of education economics, an accomplishment that renders him the envy of most every assistant professor. Meanwhile Leah with her deep social commitments carries on the family tradition of activism.

Lest you think our nominee is perfect, I wish to convey two intractable weaknesses. First, he cannot help himself when it comes to making puns. As though he were a child, he never misses a chance to mangle nuance or take unfair advantage of double entendre. Second he absolutely refuses to be politically pigeonholed. He adroitly sidesteps every stereotype. As soon as you think you have classified him as a Trotskyite, leftist, or Genghis Kahn like troglodyte, he surprises you by adapting a point of view so at odds with any you would ever have predicted as to be infuriating. It is for these and a selected few other reasons that his loving wife Judy has earned our enduring sympathy.

I present this year's AEFA Outstanding Service Award to Richard Rothstein.

- Jim Guthrie
Vanderbilt University
Past-President, AEFA

Congratulations!

Jean Flanigan 2007 Dissertation Award Goes to Daniel W. Player

This year's winner of the annual Jean Flanigan Outstanding Dissertation Award is Daniel W. Player, currently with Mathematica Policy Research, Inc., in Princeton, New Jersey.

Daniel completed his dissertation, entitled "Monetary and Non-Monetary Returns To Ability In The Market For Public School Teachers," in the Department of Economics at the University of Washington, under the supervision of Dan Goldhaber. Daniel's thesis asked the topical and policy-relevant question: do public school teachers receive monetary and non-monetary productivity premiums despite the rigidity of the single salary schedule? The AEFA makes this award annually and the recipient receives a one year membership, complimentary conference registration, a commemorative plaque and a \$500 honorarium.



2007 New Scholars Awards Presented to Katharine Strunk and Kavita Mittapalli



The first recipient of 2007 AEFA New Scholars Award is **Kavita Mittapalli**, a graduate student in the College of Education and Human Development at George Mason University, Fairfax, Virginia, where she is writing a Ph.D. dissertation under the supervision of William Fowler. Ms. Mittapalli's

proposal, "An Analysis of Personal Characteristics, Perceptions and Beliefs of Public School Teacher Leavers and Stayers." Her research involves an in-depth analysis of the personal characteristics, perceptions, and beliefs of public school teachers who chose to leave the teaching profession and those who remain as teachers.

(continued on next page)

(New Scholars Awards continued)



The second award was presented to **Katharine Strunk**. Katharine is a Ph.D. student in Administration and Policy Analysis at Stanford University's School of Education, where she is a student of Susanna Loeb. Katharine's dissertation project consists of two papers, "A Partial Independence Item Response Approach to

Measuring the Latent Restrictiveness of Teachers' Union Contracts" and "The Effects of Teachers' Union Contract Restrictiveness on Resource Distribution and Student Performance." Both these papers focus on determining the extent to which teachers' union contracts in California constrain the flexibility of school district administrators.

Each of 2007 New Scholars awardees will receive a \$1,000 stipend. They will conduct their proposed research over the next year and will present their results at AEFA's 2008 conference in Denver. The selection committee for this year's New Scholar Awards included Dave Danning, Larry Getzler, Patrice Iatarola, and Andrew Reschovsky (chair).

- Andrew Reschovsky

has expertise in the analysis of large, micro level, panel data and in the evaluation of school performance and improvements.



Joyce Levenson, Teacher Organization Affiliate, is Assistant for Negotiations, United Federation of Teachers, Local 2 AFT. She is a graduate of the New York City public schools, earned her BA from Clark University in Geography and her Masters in Public Administration

from Bernard Baruch College of the City University of New York.

Rajashri Chakrabarti, Federal Government Affiliate is an economist at the Federal Reserve Bank of New York. She focuses her research on school choice including vouchers and charters, accountability, implications of No Child Left Behind, and issues in higher education such as merit aid and early admissions to colleges.



Michael Rebell, Member at Large, is Executive Director, Campaign for Educational Equity and Professor of Law and Educational Practice at Teachers College, Columbia University; A graduate of Harvard College, he has taught courses on law and education for many years at the Yale Law School, where he received his law degree.



New President and Board Members Elected

At the 2007 AEFA Conference in Baltimore, members chose Amy Ellen Schwartz of New York University as AEFA's President-Elect. Professor Schwartz will serve as program chair for the 2008 conference in Denver, after which, she will succeed current President Jennifer King-Rice. Congrats also go to newly elected Board members:



Amy Ellen Schwartz, President-Elect, is Director of the Institute for Education and Social Policy and Professor of Public Policy, Education, and Economics at the Steinhardt School of Education and Wagner School of Public Service at NYU. She



Julie Cullen, Member at Large, is an Associate Professor of Economics at the University of California, San Diego. Cullen received her Ph.D. from the Massachusetts Institute of Technology and was a member of the faculty at the University of Michigan until 2004.

Lori Taylor, Member at Large, George Bush School of Government and Public Service, is an Assistant professor, and currently teaching public finance and a policy seminar on the costs and benefits of preschool education. She has written extensively on variations in the cost of education and on the effects of competition on teacher compensation and school productivity.



(Continued from page 1)

CALL FOR NOMINATIONS

The Board of Directors of AEFA is a working group charged with governing, planning and overseeing all of the activities of the organization. The President-Elect is primarily responsible for the program at the annual conference and after one year becomes the President, serving as the formal leader of and spokesperson for AEFA, initiating new policies, practices, and organizational relationships. For more details on the specific [duties of the AEFA Board](#), the [President](#) and the [President-Elect](#), see the attachment to this newsletter.

Any member in good standing can be nominated for these elected positions although prior service on the Board is required for the President-Elect nominees. Directors on the Board reflect the demographic and experience diversity of the membership, running the gamut from new assistant professors to experienced public servants. Typically, only about half of the Board has academic affiliations.

Board of Directors. Active, thoughtful, and dedicated Board members are critical to the successful operation of AEFA. Thus, Board members and officers must agree, prior to having their names placed in nomination, to participate actively in Board meetings and the annual conference for three consecutive years following their election.

Board members represent the entire membership of the organization. Knowledge of the profession and the field, ability to think independently, and willingness to lead effectively and to work cooperatively with others are very important attributes to our members.

President-Elect. It is required that nominees for President-Elect have previously served a full term on the Board of Directors. The President-Elect is elected at the Annual Conference and assumes the presidency following the year of service as President-Elect. During this term of office, the President-Elect serves in the absence of the President, but is primarily responsible for the program at the Annual Conference. The President serves as the formal leader of and spokesperson for AEFA, initiating new policies, practices, and organizational relationships for one year following the year of service as President-Elect. The President oversees all new and continuing organizational activities during the year of service in this role.

Please submit nominations to Julie Cullen (jbcullen@weber.ucsd.edu) or Richard Rothstein (rothstein@epi.org), co-chairs of the nominations committee, by June 14, 2007.



AEFA Spring Board of Directors Meeting

The Board met on March 21 and March 24 at the Annual Conference in Baltimore.

- **A Confirmation of the Contract with the University of Florida and R. Craig Wood as Executive Director:** The Board affirmed the contract with R. Craig Wood and the Division of Sponsored Research at the University of Florida for the services as Executive Director of the AEFA beginning July 1, 2007.
- **Report on the AEFA Journal, *Education Finance and Policy*:** The flow of manuscripts is going well and increasing. A proposal is being developed for the Spencer Foundation for their sponsorship of a thematic issue of the Journal. The editors are also considering a second thematic issue using a group of authors. This is in keeping with the original discussions regarding having one thematic issue each year similar to the former AEFA Yearbooks.
- **Preliminary Financial Reports:** Revenues totaled \$116,775 for 2006 and expenditures totaled \$107,006 for a net income of \$9,769. Preliminary balance sheet figures show assets of \$91,733 and liabilities of 24,160 for a total equity of \$67,573. Year to date figures for 2007 show a balance of \$140,889, however these figures while including membership renewals and conference registrations, do not reflect the costs of the Journal and the conference obligations.
- **Sites for Future Conferences:** With the report of the potential for record number of attendees at the Baltimore conference, the Board discussed holding the conference more frequently in the East where the majority of the members are located. On the other hand, it is difficult to grow membership in the west, especially California, if AEFA never hold the conference there. The topic will be the subject of future Board meetings
- **Awards Committee:** Chris Roellke advised that a proposal modeled after the AERA research grants, had been submitted to NCES, Mark Schneider, but was not funded at this time. The proposal had been rushed and apparently was not well received by NCES. It was hoped that a second opportunity could be presented and a more thorough proposal developed for subsequent years.



G. Alan Hickrod 1930 to 2006

G. Alan Hickrod, a founding member of AEFA, a past president of the Association and a man who always thanked everybody for what they did died peacefully in his sleep the night of Dec. 27, 2006, while visiting family in Yucca Valley, California. Along with his secretary Gwen, Alan was the mainstay of AEFA from 1975 until 1982 when George Babigian became Executive Director. His full name was George Alan Karnes Wallis Hickrod.

It was always a delight to be invited by Alan to dinner at these conferences because he was both gourmet chef and wine connoisseur. He always knew a great place to go to dinner and a wine to order. He could discuss the food, its preparation and the wine with the waiter and the chef. If he were here, he would probably take some of us to Hausers at the Hilton and order *pouilly fuisse*, even though it cost \$43 a bottle. At his viewing, there was a partially filled wine glass and an open bottle.

His letters to the editor of the Pantagraph, the local newspaper in Bloomington, Illinois, often reflected his most recent reading of politics and history. These letters, as well as some other essays, were recently published in a book titled, *An Embattled and Unapologetic Liberal*.

Alan was born May 16, 1930 in Fort Branch, Indiana. He received his bachelor degree from Wabash College in 1952. After a tour with the U.S. Marine Corps, he received his Master's and Doctorate from Harvard University in 1966. His professor at Harvard was Charles Benson, also a founding member of AEFA and a past president as well as one of the first economists to work in the field of school finance.

After graduation from Harvard, he taught at Erie College where he met and married Dr. Lucy Jen Huang. She

died April 26, 1987.

In 1967, Alan came to Illinois State University to become the first Director of the Center for the Study of Educational Finance. At the request of the Illinois Legislature, the Center monitored the progress of the school funding formula developed by Alan, and prepared biannual reports for the Illinois Legislature. On February 9, 2007, Resolution Number 20 --offered by every member of the Illinois State Senate--recognized Alan for his many contributions.

Proud of his Scottish ancestry, Alan was an organizer and one of the first chiefs of the Scottish-American Society of Central Illinois. He is one of only a few persons in the Midwest who could speak Scot Gaelic. Some of you may remember when he gave a speech to this association in Gaelic. I can only speak enough words to say: "How are you?"

Alan is survived by his wife, Dr. Marcia Escott, and her children, Beth and Don Newcomer, Malibu and Yucca Valley, California; and Eric Escott and Lulu Vallee, and their daughter, Hazel Jane Escott, Pasadena, California. He is also survived by the children, grandchildren and family members of Dr. Lucy Jen Huang Lui: Gretchen Liu, Shanghai, China; Rachel Liu, Wayne and Sue Hickrod Liu, and their daughter Rachel Liu, Troy, Mich.; and Ko Hshing and Chia Ning Huang, and their children, Pella, Iowa.

Finally, I shall be forever grateful to Alan for calling a statistic that I used in *Profiles of School Support* (by Forest Harrison and myself and published by U.S. Department of Health, Education, and Welfare) the "McLoone Index." Alan did this for many others as he called items they published by their authors name. Alan will be missed.

Every member is important to the strength of the AEFA and your best way to stay involved and contribute to your Association is to maintain your current mailing address and e-mail address in order to receive regular communications. Send changes to:

Ed Steinbrecher, Executive Director
8365 S. Armadillo Trail
Evergreen, CO 80439
Ph. (303) 674-0857
Fax (303) 670-8986

E-mail EdS@aefa.cc



AEFA Officers: Jennifer King-Rice, President; Amy Ellen Schwartz, President-Elect; Christopher Roellke, Immediate Past President; and Ed Steinbrecher, Executive Director. **Board of Directors: Terms Expire at Adjournment of the 2008 Conference:** Lawrence Getzler, Jennifer Imazeki, Kim Rueben, Anthony Rolle and Richard Rothstein. **Terms Expire at Adjournment of the 2009 Conference:** Abigail Payne, William Mathis, Eric Hanushek, Patrice Iatarola and Andrew Reschovsky. **Terms Expire at Adjournment of the 2010 Conference:** Joyce Levenson, Rajashri Chakrabarti, Michael Rebell, Julie Cullen, and Lori Taylor. **Designees of Sustaining Members:** Edward J. Hurley, National Education Association; Jewell C. Gould, American Federation of Teachers; and Ronald Skinner, Association of School Business Officials International. **Institutional Members:** American Institutes for Research, New Jersey Department of Education, Rand Corporation, Texas A&M University, University at Albany-SUNY, Vanderbilt University, Wisconsin Center for Postsecondary Education (WISCAPE) at the University of Wisconsin-Madison. **Newsletter Editor:** F. Howard Nelson. **Education Finance and Policy, Executive Editors:** David Figlio and David Monk. **Executive Director Emeritus:** George R. Babigian. **Website:** <http://www.aefa.cc/>.

DUTIES OF THE BOARD OF DIRECTORS THE AMERICAN EDUCATION FINANCE ASSOCIATION

The Board of Directors of the American Education Finance Association is a working group charged with governing, planning and overseeing all of the activities of the organization. Board members and officers must agree, prior to having their names placed in nomination, to participate actively in Board meetings and the annual conference for three consecutive years following their election.

Board members represent the entire membership of the organization. The powers and authority of Board members and officers are derived from the Articles of Incorporation and the By-laws of the organization. The Board meets three times a year--prior to the annual conference, immediately after the annual conference, and once during the summer months. The pre-conference meeting is usually 9:00 a.m. to noon the first day of the conference. The post-conference meeting is usually from 1:00-3:00 p.m. immediately following the last general session. The summer Board meeting, usually in June or July, begins early on a Friday morning and is completed by early afternoon on Saturday.

Board member responsibilities are as follows.

- + Serve as chairpersons and members of standing and ad hoc committees.
- + Participate in conference planning, including site, themes, and logistics.
- + Assist in the implementation of conference plans.
- + Assist with the development of newsletter copy.
- + Provide policy and administrative leadership and advice.
- + Participate in the development and approval of the annual budget.
- + Participate in membership drives.
- + Render internal and external leadership to the organization.

Committees of the Board include:

- + Outstanding Dissertation
- + Outstanding Service
- + Nominations
- + Long Range Planning and Administration (Immediate Past President, President, President-Elect, Secretary-Treasurer, and at least one other Board member)
- + Membership (Secretary-Treasurer/Executive Director and a minimum of two representatives of the Board plus a minimum of two representatives of sustaining members of the Board)
- + Special Committees (e.g., Constitutional Revisions, Study Groups, Research Initiative)

DUTIES OF THE PRESIDENT OF THE AMERICAN EDUCATION FINANCE ASSOCIATION

The President serves as the formal leader of and spokesperson for AEFA, initiating new policies, practices, and organizational relationships for one year following the year of service as President-Elect. The President oversees all new and continuing organizational activities during the year of service in this role. Specific on-going responsibilities include:

- + Prepares agendas and presides over the Board meetings that follow the annual conference in which the person served as President-Elect, the summer Board meeting, and the Board meeting prior to the next annual conference.
- + Chairs the executive committee and serves on the long range planning committee of the Board.
- + Appoints chairpersons and members to Board committees immediately after the annual conference and oversees the work of these committees.
- + Works with the newsletter editor to plan and provide copy for newsletters.

- ✚ Presides, wherever needed, at the annual conference.
- ✚ Presents a brief presidential address at the annual conference.
- ✚ Sends follow-up letters to all committee chairs and Board members who served during the year and retiring Board members.
- ✚ Advises the President-Elect on matters pertaining to the annual conference.

DUTIES OF THE VICE PRESIDENT AND PRESIDENT-ELECT OF THE AMERICAN EDUCATION FINANCE ASSOCIATION

The Vice President also serves as President-Elect. It is suggested that nominees for the position have previously served a full term on the Board of Directors. The Vice President is elected at the annual conference and assumes the presidency following the year of service as vice-president. During this term of office, the Vice President serves in the absence of the President, but is primarily responsible for the program at the annual conference. Tasks associated with the President-Elect include.

- ✚ In the absence of the President, presides over meetings and annual conference activities.
- ✚ Appoints and presides over a program committee at the Board meeting following the annual conference.
- ✚ Solicits proposals for sessions at the annual conference.
- ✚ Presents tentative conference plans and a theme at the summer Board meeting and solicits Board input and other specific assistance with conference planning.
- ✚ Identifies and contracts for services with major speakers during the summer prior to the annual conference; determines their travel arrangements, lodging and audio-visual needs.
- ✚ Prepares and distributes pre-registration mailers describing conference highlights and logistics in conjunction with the secretary-treasurer and president.
- ✚ Provides copy about the conference and keynote speakers to the newsletter editor for the late summer and winter editions of the newsletter.
- ✚ Acknowledges receipt of proposals, oversees selection of proposals, organizes presentations thematically, schedules presentations, determines audio-visual requirements, and notifies presenters of their participation and conference logistics.
- ✚ Prepares the annual conference program, makes room assignments, schedules breaks and socials, and audio-visual schedules with the secretary-treasurer. Programs are printed and brought to the conference site.
- ✚ Mails copies of the conference program to major speakers and confirms travel, lodging, and audio-visual plans about one and one-half months prior to the conference.
- ✚ Prepares follow-up letters to major presenters and others who played significant roles in the annual conference.
- ✚ Selects the recipients for the Roe John's Travel Award.